

We bring your message to life

Never again will poor sound quality in video calls or meetings spoil your experience

Our product range has never sounded better. In our constant quest of making life easy for presenters we introduce **Neets Sound Bar - SB1**

Now, high class sound comes in one easy-to-install sound bar with extremely good looks.

The Neets Sound Bar - SB1 is a stylish sound bar, designed to bring your message to life. Whether you're in a meeting presenting a video, an audio track or facilitating a conference call, the quality of the sound is crucial. That is why we have created the Neets Sound Bar - SB1.

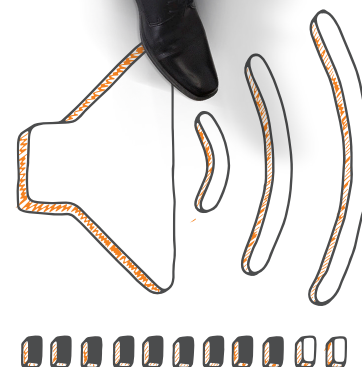
Sound and style united

It has never before been this easy and stylish to enhance the audio performance in conference and meeting rooms as

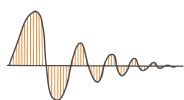
well as in video calls. The 2.0 full-range stereo front speaker system, with built-in DSP, offers a massive improvement of the sound compared to the rear-facing speakers you typically find in displays. The grill is fully covered in modern fabric and the MDF cabinet with durable matt vinyl.

Standalone or fully integrated

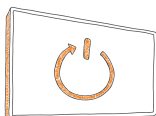
The Neets Sound Bar - SB1 is simple and advanced at the same time. You can simply connect it to the display and use the wake-on-signal feature or you can integrate it with your control system through the RS-232 port. This provides you with rich features such as EQ presets and input selection.



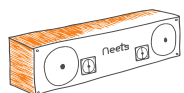
Turn it up. With **Neets Sound Bar - SB1** you can turn up the volume with confidence



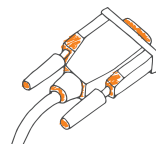
Amplifier with built in "fixed-function" DSP ensures high sound quality for all purposes



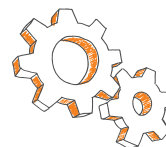
Automatically turns on/off. This is energy efficient and eliminates the need for remote controls



Full-Range Sound Bar with no need for a subwoofer. The two 4" drivers and two 1" tweeters delivers all the depth you need



The RS-232 port opens for customization possibilities like the EQ presets for different user scenarios



Technical information
Turn page

Neets Sound Bar - SB1



Benefits

- Standalone solution or integration with Neets Control Systems through RS-232 control port
- High-quality sound bar with DSP for Digital Signal Processing
- A variety of inputs: TOSLINK, RCA-Phono, balanced/unbalanced
- Slim line design and high quality finish. Click-on front grill fully covered in fabric
- Can be mounted anywhere or sit on a shelf
- Wall mount bracket included

Features

System

2.0 stereo configuration, based on concept from stereo monitors: 2 set of 4" full-tone woofers + 1" tweeter

Amplifier

Amplifier with built-in DSP functionality

Power on

RS-232 or "Wake-on-signal"

Inputs

- TOSLINK
- RCA Phono
- Balanced/unbalanced stereo inputs via euroblock terminal connectors
- Inputs are selected only, not mixed
- All inputs is recessed in a terminal panel, on the back to ensure flush wall mounting

Cabinet

All MDF construction is covered in black vinyl and the front grill is in fabric

Size

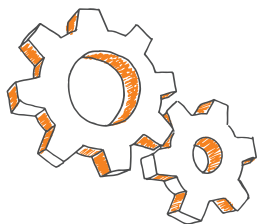
1018mm x 130mm x 81mm

Power indicator

Power LEDs on the front integrated behind grill

Control System compatibility

Compatible with Neets Control Systems, supporting On/Off, volume up/down, mute output, select input, set EQ preset and activate/deactivate wake-on signal



For in-depth info
please check www.neets.dk/soundbar